



ENERGY TECH

# SOLAR COMBINER BOX

**ROCKGRAND** GROUP







温州大觀電器有限公司  
WENZHOU DAGUAN ELECTRICS CO., LTD.

 WENZHOU DAGUAN ELECTRICS CO.,LTD.



ISO9001:2000  
ISO14000:2004  
ISO18000:2001





# SOLAR COMBINER BOX

## 1 IN 1 OUT DC 600V/1000V



### Application ■

PV String DC Combiner Boxes are key components in the solar power systems, which are placed between solar modules and the inverters.

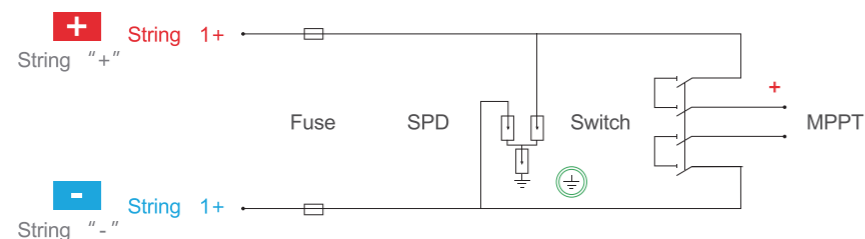
### Specifications ■

Solar PV DC 1 in 1 out Combiner Box			
Rated voltage of photovoltaic system	DC 600V&1000V	Max input amp for each string	15A
Input strings	1	Number of output strings	1
Waterproof grade ip65/ Lighting protection			
Category of test	II grade protection	Nominal discharge amp	20KA
Max discharge amp	40KA	Volt protection level	3.2KV
SPD Max operation voltage	DC 600V&1000V	Poles	2P
Structure characteristic	Plug push module		
System			
Protection grade	Ip65	Output switch	DC circuit breaker & DC isolation switch
Solar connector	Standard	Box material	PVC
Installation method	Wall mounting type	Operating temperature	-25°C~+60°C
Installation: indoors/outdoors	Yes		
Mechanical parameter			
Width*high*Depth(mm)	200*155*95 ■ 215*210*100 ■ 212*207*118		

### Features ■

- Very high impact resistance
- Easy machining with normal tools
- IP65
- Wide operation temperature range
- Fire Resistance
- Non-conductive
- Good resistance to chemical corrosion
- Light weight
- Excellent insulating properties
- Cost-effective material for harsh environments

### Wiring Diagram ■



# SOLAR COMBINER BOX

## 2 IN 1 OUT DC 600V/1000V



ENERGY TECH

### Application ■

PV String DC Combiner Boxes are key components in the solar power systems, which are placed between solar modules and the inverters.

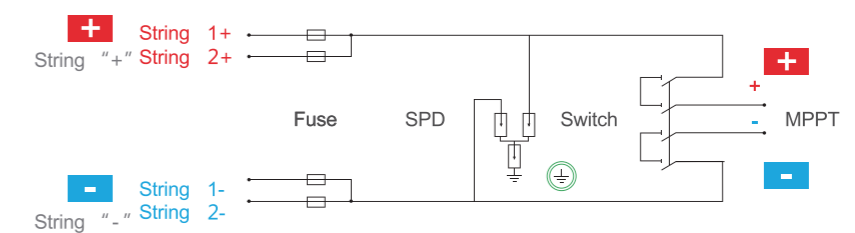
### Specifications ■

Solar PV DC 2 in 1 out Combiner Box			
Rated voltage of photovoltaic system	DC 600V&1000V	Max input amp for each string	15A
Input strings	2	Number of output strings	1
Waterproof grade ip65/ Lighting protection			
Category of test	II grade protection	Nominal discharge amp	20KA
Max discharge amp	40KA	Volt protection level	3.5KV
SPD Max operation voltage	DC 600V&1000V	Poles	2P/3P
Structure characteristic	Plug push module		
System			
Protection grade	Ip65	Output switch	DC circuit breaker & DC isolation switch
Solar connector	Standard	Box material	PVC
Installation method	Wall mounting type	Operating temperature	-25°C~+60°C
Installation: indoors/outdoors	Yes		
Mechanical parameter			
Width*high*Depth(mm)	200*155*95 ■ 255*200*115		

### Features ■

- Very high impact resistance
- Easy machining with normal tools
- IP65
- Wide operation temperature range
- Fire Resistance
- Non-conductive
- Good resistance to chemical corrosion
- Light weight
- Excellent insulating properties
- Cost-effective material for harsh environments

### Wiring Diagram ■



# SOLAR COMBINER BOX

## 2 IN 2 OUT DC 600V/1000V



### Application ■

PV String DC Combiner Boxes are key components in the solar power systems, which are placed between solar modules and the inverters.

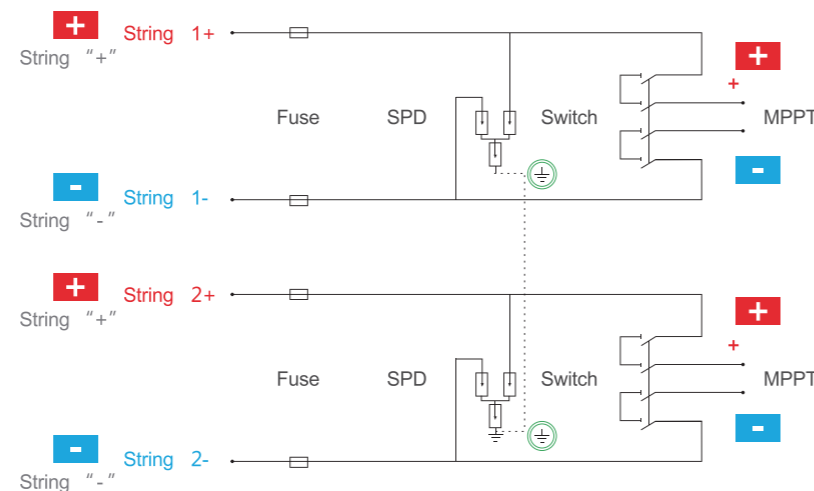
### Specifications ■

Solar PV DC 2 in 2 out Combiner Box			
Rated voltage of photovoltaic system	DC 600V&1000V	Max input amp for each string	15A
Input strings	2	Number of output strings	2
Waterproof grade ip65/ Lighting protection			
Category of test	II grade protection	Nominal discharge amp	20KA
Max discharge amp	40KA	Volt protection level	3.5KV
SPD Max operation voltage	DC 600V&1000V	Poles	2P/3P
Structure characteristic	Plug push module		
System			
Protection grade	IP65	Output switch	DC circuit breaker & DC isolation switch
Solar connector	Standard	Box material	PVC
Installation method	Wall mounting type	Operating temperature	-25°C~+60°C
Installation: indoors/outdoors	Yes		
Mechanical parameter			
Width*high*Depth(mm)	295*260*140 ■ 310*200*110 ■ 360*200*110 ■ 415*283*135		

### Features ■

- Very high impact resistance
- Easy machining with normal tools
- IP65
- Wide operation temperature range
- Fire Resistance
- Non-conductive
- Good resistance to chemical corrosion
- Light weight
- Excellent insulating properties
- Cost-effective material for harsh environments

### Wiring Diagram ■



# SOLAR COMBINER BOX

## 3 IN 1 OUT DC 1000V



ENERGY TECH

### Application ■

PV String DC Combiner Boxes are key components in the solar power systems, which are placed between solar modules and the inverters.

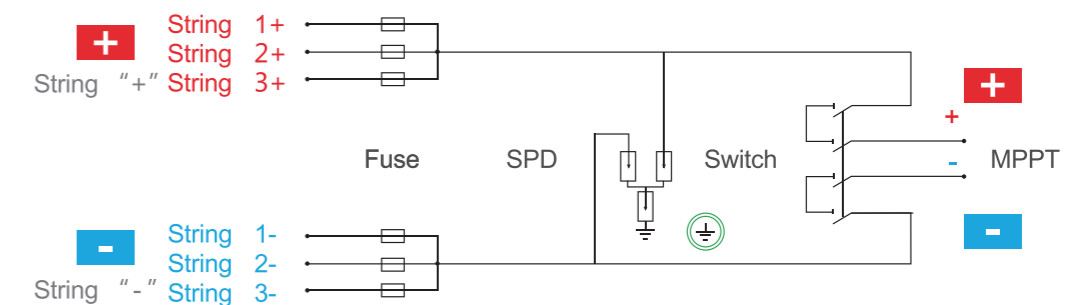
### Specifications ■

Solar PV DC 3 in 1 out Combiner Box			
Rated voltage of photovoltaic system	DC 1000V	Max input amp for each string	15A
Input strings	3	Number of output strings	1
Waterproof grade ip65/ Lighting protection			
Category of test	II grade protection	Nominal discharge amp	20KA
Max discharge amp	40KA	Volt protection level	3.5KV
SPD Max operation voltage	DC1000V	Poles	2P
Structure characteristic	Plug push module		
System			
Protection grade	IP65	Output switch	DC isolation switch
Solar connector	Standard	Box material	PVC
Installation method	Wall mounting type	Operating temperature	-25°C~+60°C
Installation: indoors/outdoors	Yes		
Mechanical parameter			
Width*high*Depth(mm)	295*255*135		

### Features ■

- Very high impact resistance
- Easy machining with normal tools
- IP65
- Wide operation temperature range
- Fire Resistance
- Non-conductive
- Good resistance to chemical corrosion
- Light weight
- Excellent insulating properties
- Cost-effective material for harsh environments

### Wiring Diagram ■



# SOLAR COMBINER BOX

## 3 IN 3 OUT DC 600V



### Application ■

PV String DC Combiner Boxes are key components in the solar power systems, which are placed between solar modules and the inverters.

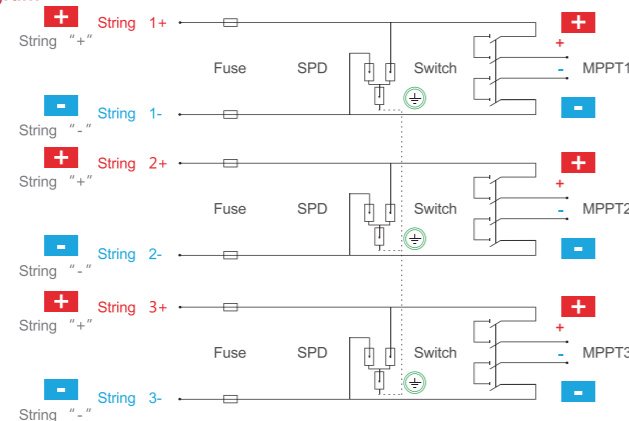
### Specifications ■

Solar PV DC 3 in 3 out Combiner Box			
Rated voltage of photovoltaic system	DC 600V	Max input amp for each string	15A
Input strings	3	Number of output strings	3
Waterproof grade ip65/ Lighting protection			
Category of test	II grade protection	Nominal discharge amp	20KA
Max discharge amp	40KA	Volt protection level	2.8KV
SPD Max operation voltage	DC 600V	Poles	2P
Structure characteristic	Plug push module		
System			
Protection grade	IP65	Output switch	2P DC circuit breaker
Solar connector	Standard	Box material	PVC
Installation method	Wall mounting type	Operating temperature	-25°C~+60°C
Installation: indoors/outdoors	Yes		
Mechanical parameter			
Width*high*Depth(mm)	410*280*130		

### Features ■

- Very high impact resistance
- Easy machining with normal tools
- IP65
- Wide operation temperature range
- Fire Resistance
- Non-conductive
- Good resistance to chemical corrosion
- Light weight
- Excellent insulating properties
- Cost-effective material for harsh environments

### Wiring Diagram ■



# SOLAR COMBINER BOX

## 4 IN 1 OUT DC 600V/1000V



### Application ■

PV String DC Combiner Boxes are key components in the solar power systems, which are placed between solar modules and the inverters.

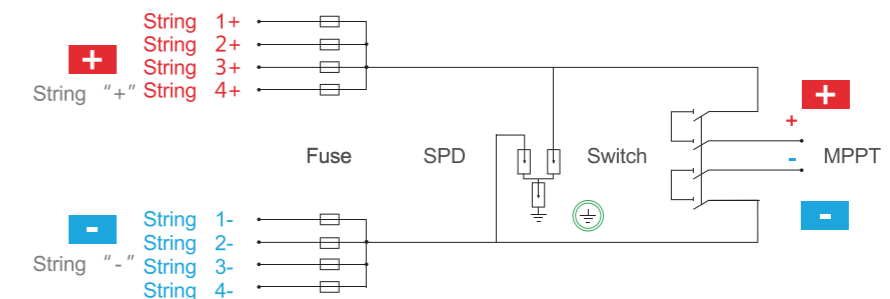
### Specifications ■

Solar PV DC 4 in 1 out Combiner Box			
Rated voltage of photovoltaic system	DC 600V&1000V	Max input amp for each string	15A
Input strings	4	Number of output strings	1
Waterproof grade ip65/ Lighting protection			
Category of test	II grade protection	Nominal discharge amp	20KA
Max discharge amp	40KA	Volt protection level	3.5KV
SPD Max operation voltage	DC 600V&1000V	Poles	2P/3P
Structure characteristic	Plug push module		
System			
Protection grade	Ip65	Output switch	DC circuit breaker
Solar connector	Standard	Box material	PVC/ABS
Installation method	Wall mounting type	Operating temperature	-25°C~+60°C
Installation: indoors/outdoors	Yes		
Mechanical parameter			
Width*high*Depth(mm)	170*220*110 ■ 270*360*155 ■ 310*200*110 ■ 415*283*135		

### Features ■

- Very high impact resistance
- Easy machining with normal tools
- IP65
- Wide operation temperature range
- Fire Resistance
- Non-conductive
- Good resistance to chemical corrosion
- Light weight
- Excellent insulating properties
- Cost-effective material for harsh environments

### Wiring Diagram ■





# SOLAR COMBINER BOX

## 4 IN 2 OUT DC 600V/1000V



### Application ■

PV String DC Combiner Boxes are key components in the solar power systems, which are placed between solar modules and the inverters.

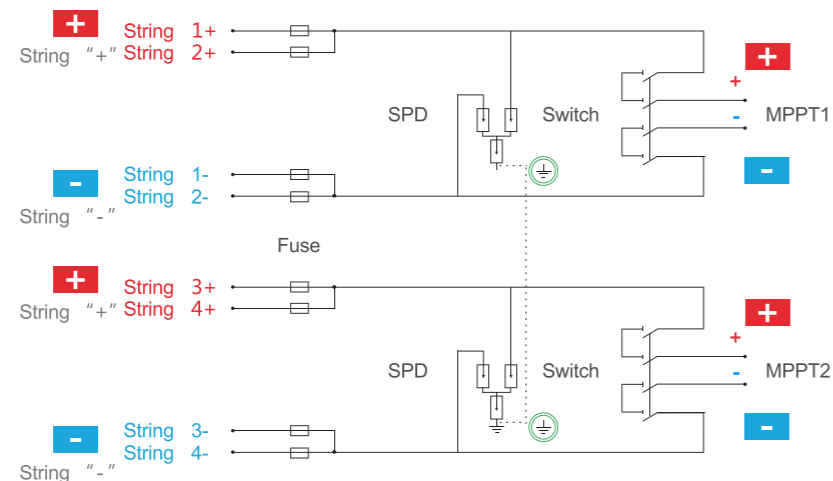
### Specifications ■

Solar PV DC 4 in 2 out Combiner Box			
Rated voltage of photovoltaic system	DC 600V&1000V	Max input amp for each string	15A
Input strings	4	Number of output strings	2
Waterproof grade ip65/ Lighting protection			
Category of test	II grade protection	Nominal discharge amp	20KA
Max discharge amp	40KA	Volt protection level	3.5KV
SPD Max operation voltage	DC 600V&1000V	Poles	2P/3P
Structure characteristic	Plug push module		
System			
Protection grade	IP65	Output switch	DC circuit breaker & DC isolation switch
Solar connector	Standard	Box material	PVC
Installation method	Wall mounting type	Operating temperature	-25°C~+60°C
Installation: indoors/outdoors	Yes		
Mechanical parameter			
Width*high*Depth(mm)	280*350*110 ■ 365*200*110 ■ 415*283*135		

### Features ■

- Very high impact resistance
- Easy machining with normal tools
- IP65
- Wide operation temperature range
- Fire Resistance
- Non-conductive
- Good resistance to chemical corrosion
- Light weight
- Excellent insulating properties
- Cost-effective material for harsh environments

### Wiring Diagram ■



# SOLAR COMBINER BOX

## 4 IN 4 OUT DC 600V



### Application ■

PV String DC Combiner Boxes are key components in the solar power systems, which are placed between solar modules and the inverters.

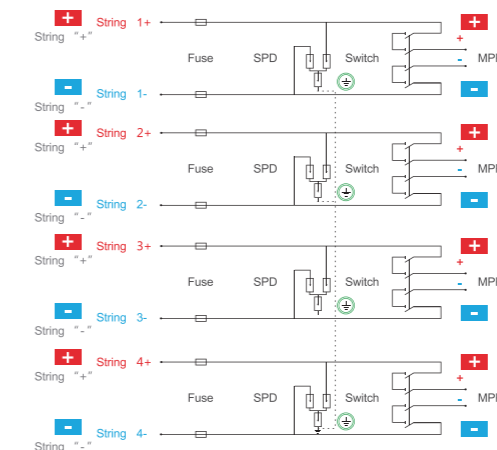
### Specifications ■

Solar PV DC 4 in 4 out Combiner Box			
Rated voltage of photovoltaic system	DC 600V	Max input amp for each string	15A
Input strings	4	Number of output strings	4
Waterproof grade ip65/ Lighting protection			
Category of test	II grade protection	Nominal discharge amp	20KA
Max discharge amp	40KA	Volt protection level	2.8KV
SPD Max operation voltage	DC 600V	Poles	2P
Structure characteristic	Plug push module		
System			
Protection grade	IP65	Output switch	2P DC circuit breaker
Solar connector	Standard	Box material	PVC
Installation method	Wall mounting type	Operating temperature	-25°C~+60°C
Installation: indoors/outdoors	Yes		
Mechanical parameter			
Width*high*Depth(mm)	280*350*110		

### Features ■

- Very high impact resistance
- Easy machining with normal tools
- IP65
- Wide operation temperature range
- Fire Resistance
- Non-conductive
- Good resistance to chemical corrosion
- Light weight
- Excellent insulating properties
- Cost-effective material for harsh environments

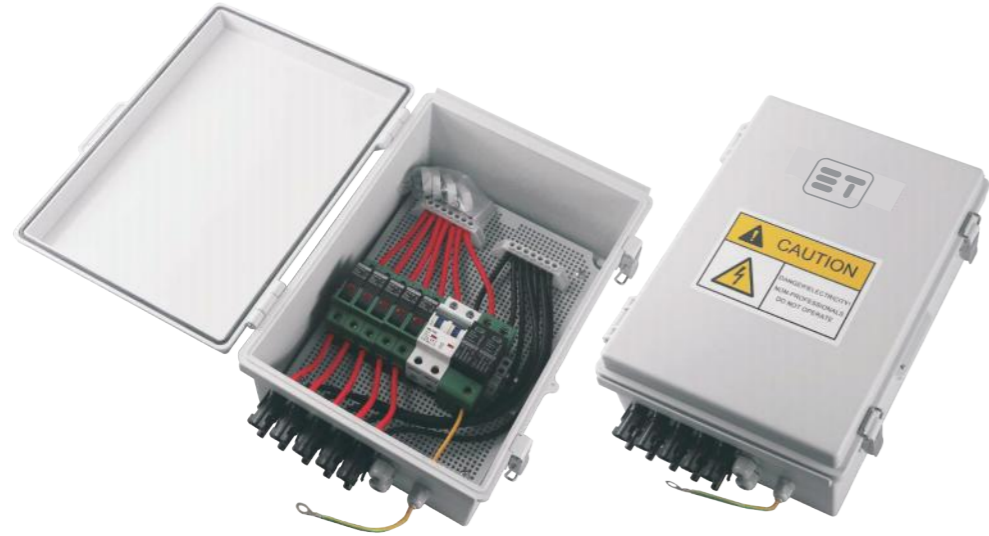
### Wiring Diagram ■



ENERGY TECH

# SOLAR COMBINER BOX

## 5 IN 1 OUT DC 600V



### Application ■

PV String DC Combiner Boxes are key components in the solar power systems, which are placed between solar modules and the inverters.

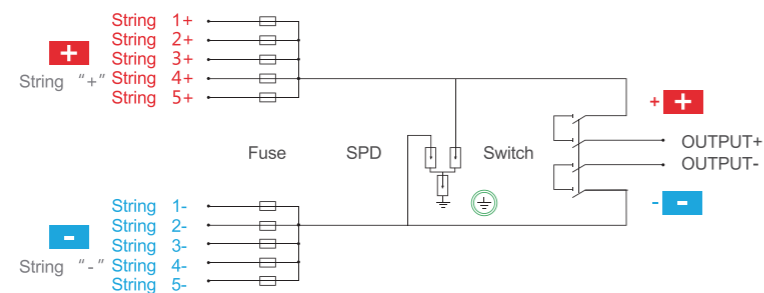
### Specifications ■

Solar PV DC 5 in 1 out Combiner Box			
Rated voltage of photovoltaic system	DC 600V	Max input amp for each string	15A
Input strings	5	Number of output strings	1
Waterproof grade ip65/ Lighting protection			
Category of test	II grade protection	Nominal discharge amp	20KA
Max discharge amp	40KA	Volt protection level	3.2KV
SPD Max operation voltage	DC 600V	Poles	2P
Structure characteristic	Plug push module		
System			
Protection grade	IP65	Output switch	2P DC circuit breaker
Solar connector	Standard	Box material	ABS
Installation method	Wall mounting type	Operating temperature	-25°C+60°C
Installation: indoors/outdoors	Yes		
Mechanical parameter			
Width*high*Depth(mm)	250*360*150		

### Features ■

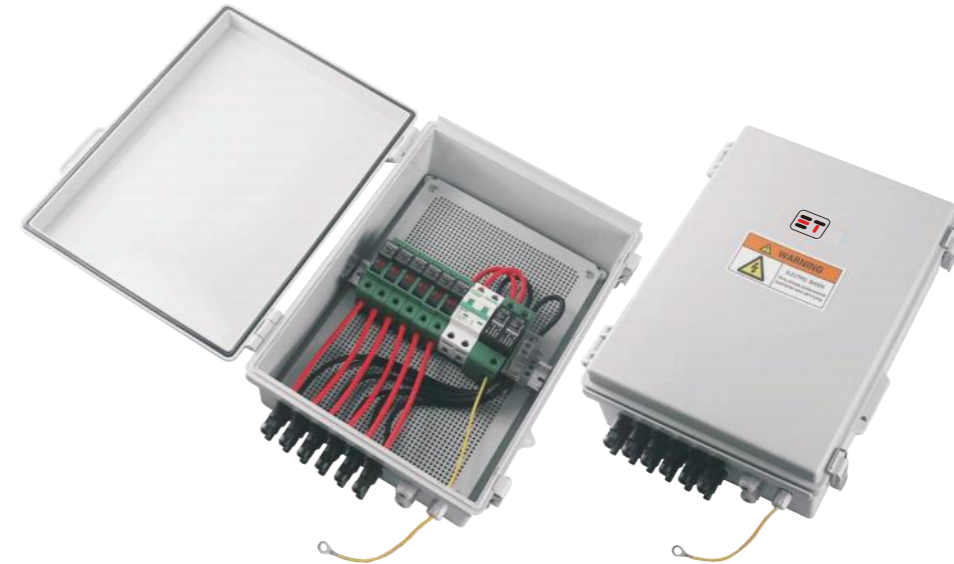
- Very high impact resistance
- Easy machining with normal tools
- IP65
- Wide operation temperature range
- Fire Resistance
- Non-conductive
- Good resistance to chemical corrosion
- Light weight
- Excellent insulating properties
- Cost-effective material for harsh environments

### Wiring Diagram ■



# SOLAR COMBINER BOX

## 6 IN 1 OUT DC 600V



### Application ■

PV String DC Combiner Boxes are key components in the solar power systems, which are placed between solar modules and the inverters.

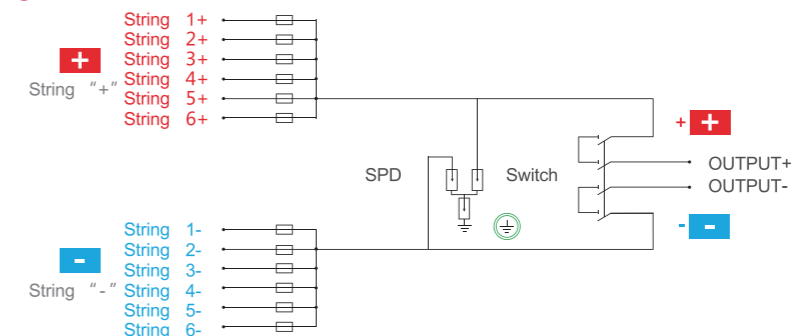
### Specifications ■

Solar PV DC 6 in 1 out Combiner Box			
Rated voltage of photovoltaic system	DC 600V	Max input amp for each string	15A
Input strings	6	Number of output strings	1
Waterproof grade ip65/ Lighting protection			
Category of test	II grade protection	Nominal discharge amp	20KA
Max discharge amp	40KA	Volt protection level	2.8KV
SPD Max operation voltage	DC 600V	Poles	2P
Structure characteristic	Plug push module		
System			
Protection grade	IP65	Output switch	2P DC circuit breaker
Solar connector	Standard	Box material	ABS
Installation method	Wall mounting type	Operating temperature	-25°C+60°C
Installation: indoors/outdoors	Yes		
Mechanical parameter			
Width*high*Depth(mm)	300*390*135		

### Features ■

- Very high impact resistance
- Easy machining with normal tools
- IP65
- Wide operation temperature range
- Fire Resistance
- Non-conductive
- Good resistance to chemical corrosion
- Light weight
- Excellent insulating properties
- Cost-effective material for harsh environments

### Wiring Diagram ■



ENERGY TECH

# SOLAR COMBINER BOX

6 IN 2 OUT DC 1000V



## Application ■

PV String DC Combiner Boxes are key components in the solar power systems, which are placed between solar modules and the inverters.

## Specifications ■

Solar PV DC 6 in 2 out Combiner Box			
Rated voltage of photovoltaic system	DC 1000V	Max input amp for each string	15A
Input strings	6	Number of output strings	2
Waterproof grade ip65/ Lighting protection			
Category of test	II grade protection	Nominal discharge amp	20KA
Max discharge amp	40KA	Volt protection level	3.5KV
SPD Max operation voltage	DC 1000V	Poles	2P/3P
Structure characteristic	Plug push module		
System			
Protection grade	IP65	Output switch	DC circuit breaker
Solar connector	Standard	Box material	PVC
Installation method	Wall mounting type	Operating temperature	-25°C-+60°C
Installation: indoors/outdoors	Yes		
Mechanical parameter			
Width*high*Depth(mm)	275*360*110 ■ 420*324*130		

## Features ■

- Very high impact resistance
- Easy machining with normal tools
- IP65
- Wide operation temperature range
- Fire Resistance
- Non-conductive
- Good resistance to chemical corrosion
- Light weight
- Excellent insulating properties
- Cost-effective material for harsh environments

## Wiring Diagram ■

