

A ⚡ **B**tech[®]

Distribution Box

G21 **NEW**



A ⚡ **B**tech[®]
Your Right To Quality & Durability

DEGREE OF PROTECTION:
IP-40

A ⚡ B. Offering an ageless legacy /
in electrical world. /



IF BREAKER TRIPS:

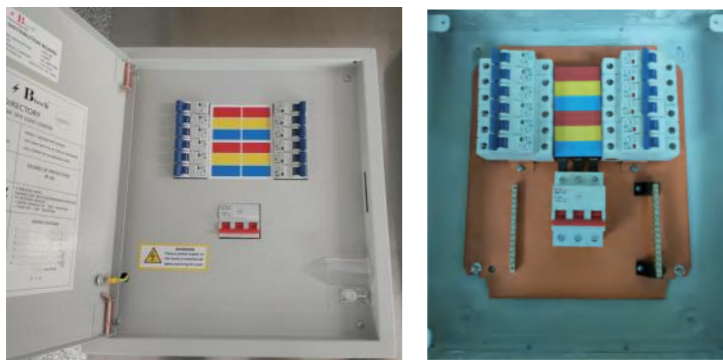
HANDLE WILL BE IN INTERMEDIATE POSITION TO RESTORE SERVICE:

- MOVE HANDLE TO "OFF" POSITION
- THEN TO "ON" POSITION

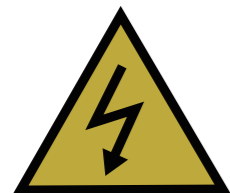
NEMA 1 INDOOR ENCLOSURE

USE ONLY WITH A/Bt CIRCUIT BREAKERS

USE COPPER OR ALUMINIUM WIRE



DANGER: HAZARD OF ELECTRICAL SHOCK OR BURN. TURN OFF POWER BEFORE WORKING INSIDE THIS UNIT OR EQUIPMENT.



WARNING

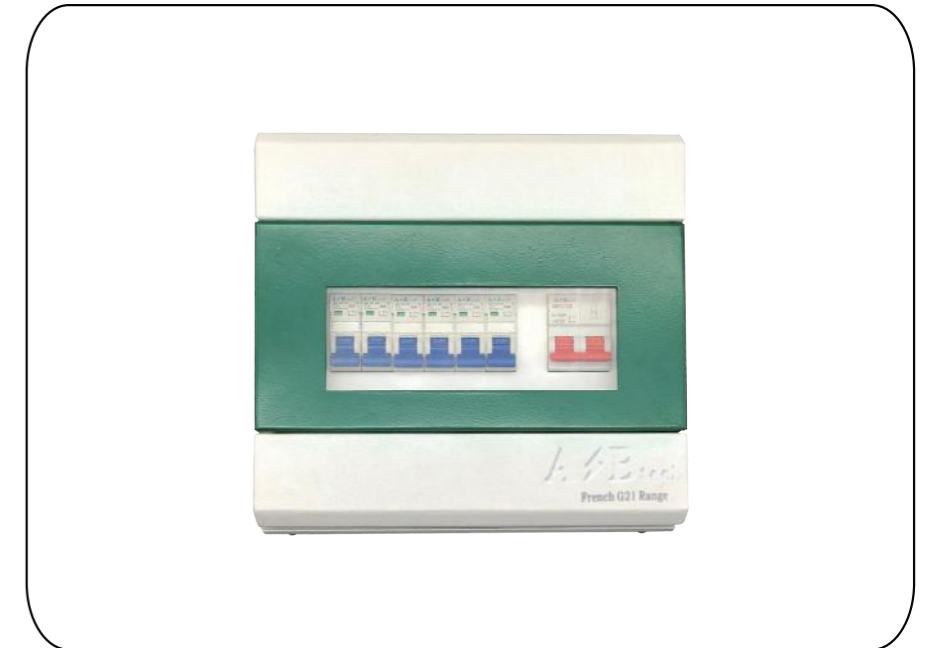
Ensure power supply to this board is switched off before removing the cover.

MCB DISTRIBUTION BOARD



TYPE : TPN DB (THREE PHASE)
 OUTGOING WAYS/PHASE : 4/6/8/12 WAY
 REFERENCE : BS 5486:1986
 BUSBAR RATED CURRENT : 125 Amp
 RATED VOLTAGE Un : 240V/415V AC 50Hz

MCB DISTRIBUTION BOARD



TYPE : SPN DB (SINGLE PHASE)
 OUTGOING WAYS/PHASE : 4/6/8/12 WAY
 REFERENCE : BS 5486:1986
 BUSBAR RATED CURRENT : 125 Amp
 RATED VOLTAGE Un : 240V/415V AC 50Hz